

CipherLab **User Guide**

Installation of USB Virtual COM

Version 1.03



RELEASE NOTES

Version	Date	Notes
1.03	May 05, 2016	<ul style="list-style-type: none">▶ Modified: Silicon drivers installation for Win 7/8 added▶ Modified: CDC USB VCOM drivers installation added
1.02	May 13, 2014	Modified: Install USB Virtual COM Drivers – files on CD updated
1.01	Dec. 10, 2009	Supports driver for Windows 7
1.00	Apr. 09, 2009	Initial release

CONTENTS

RELEASE NOTES	- 2 -
INSTALLING USB VIRTUAL COM DRIVERS	1
Silicon Laboratories USB Virtual COM Drivers.....	1
Drivers for Windows 2000/XP/2003 Server/Vista	1
Checking Existing Driver Version	6
Removal of Existing Setup File & Drivers	6
Drivers for Windows 7/Windows 8.....	9
CDC USB Virtual COM Drivers	11
USING USB VIRTUAL COM	13
Connecting Your USB Device to Host	13
Checking Available COM Ports.....	14

INSTALLING USB VIRTUAL COM DRIVERS

If you are using USB Virtual COM for the first time, please install its drivers beforehand.

SILICON LABORATORIES USB VIRTUAL COM DRIVERS

Run the appropriate setup file provided:

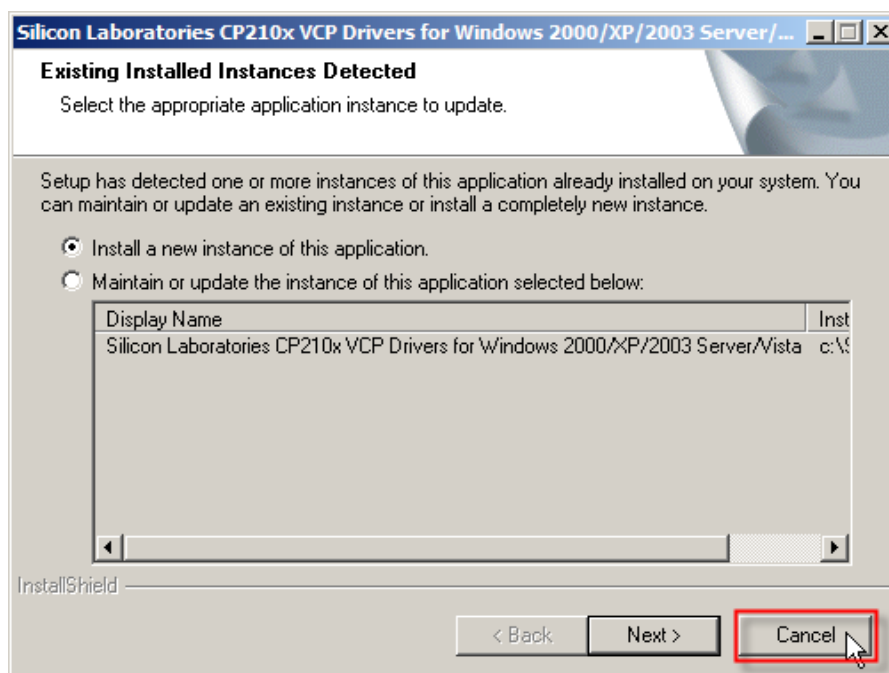
File Name	Operating System
CP210x_VCP_Win2K_XP_S2K3.exe	Windows 2000/XP/2003 Server/Vista
CP210x_VCPInstaller_x86.exe	Windows 7/Windows 8 (32-bit)
CP210x_VCPInstaller_x64.exe	Windows 7/Windows 8 (64-bit)

Note: Drivers for Windows 98se is not included in the driver package. Please contact our sales representative for drivers. For Windows 10, there's no need to install USB Virtual COM drivers.

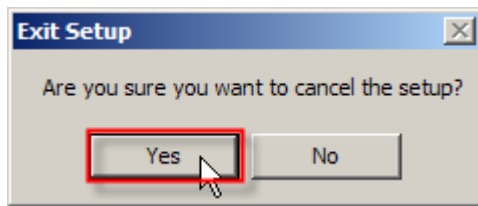
DRIVERS FOR WINDOWS 2000/XP/2003 SERVER/VISTA

The InstallShield Wizard will guide you through how to install drivers for Windows 2000/XP/2003 Server/Vista.

Be aware that if there is an existing setup file installed on your computer, you will see the following dialog box. Click [Cancel] to exit setup.

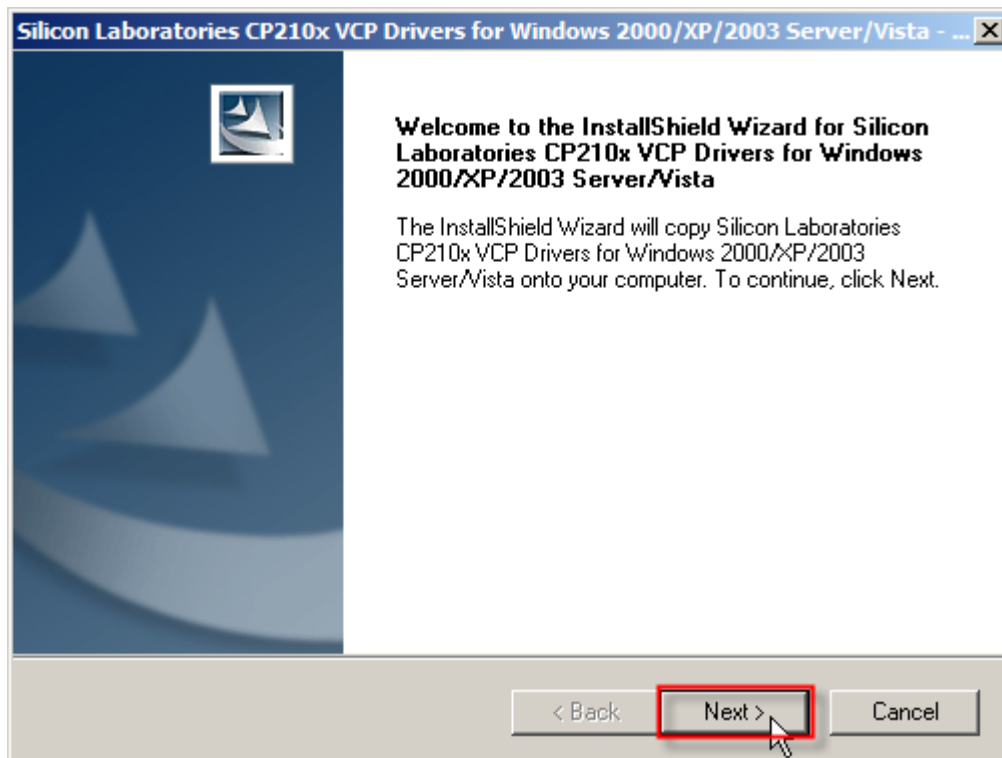


Click [Yes] to cancel the setup.

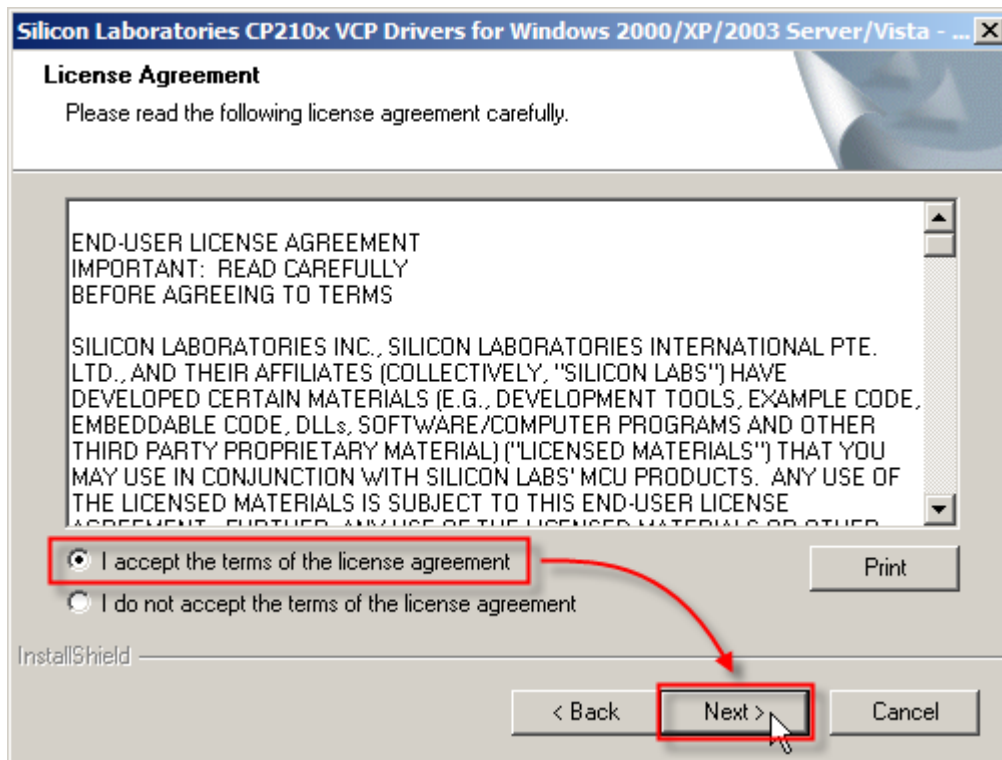


Refer to [Checking Existing Driver Version](#) and find out if the driver version is 5.3 or later.

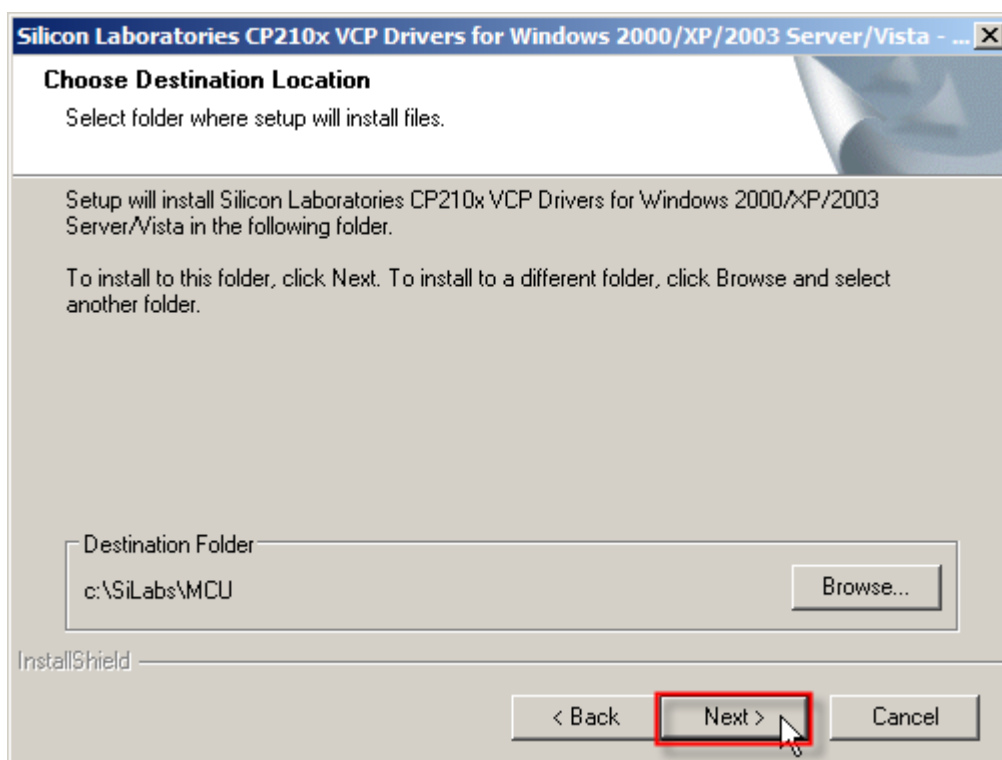
I) Click [Next] to continue.



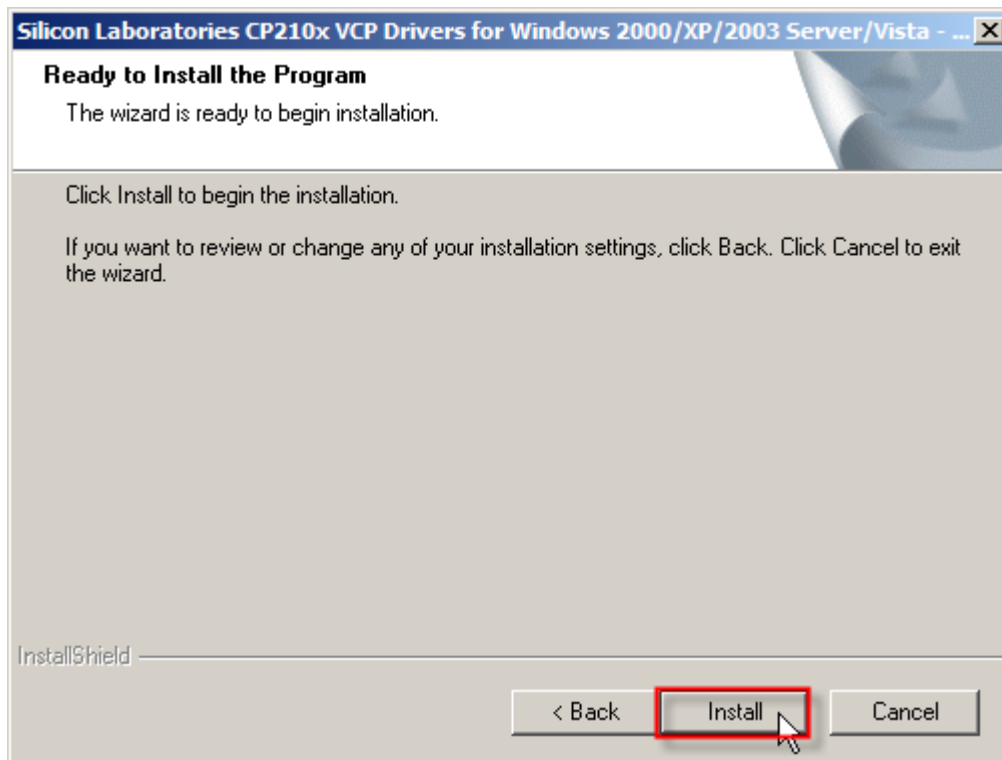
- 2) Read the License Agreement and select to accept the terms. Click [Next] to continue.



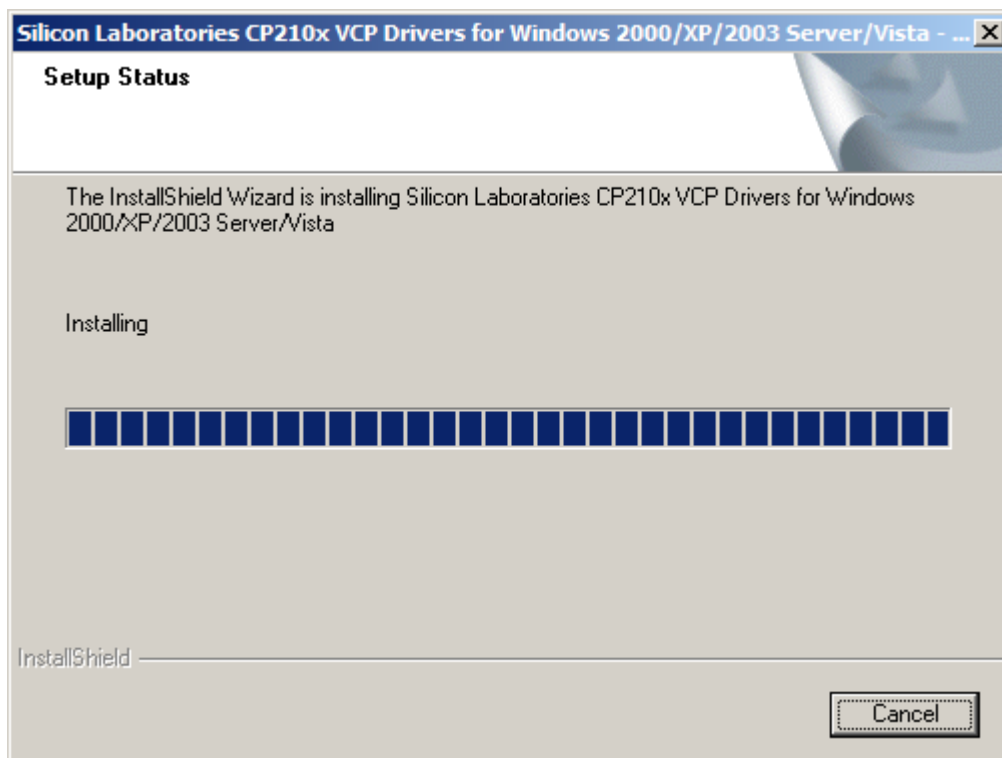
- 3) If you wish to change the destination location, click [Browse...] on the right. Otherwise, click [Next] to continue.



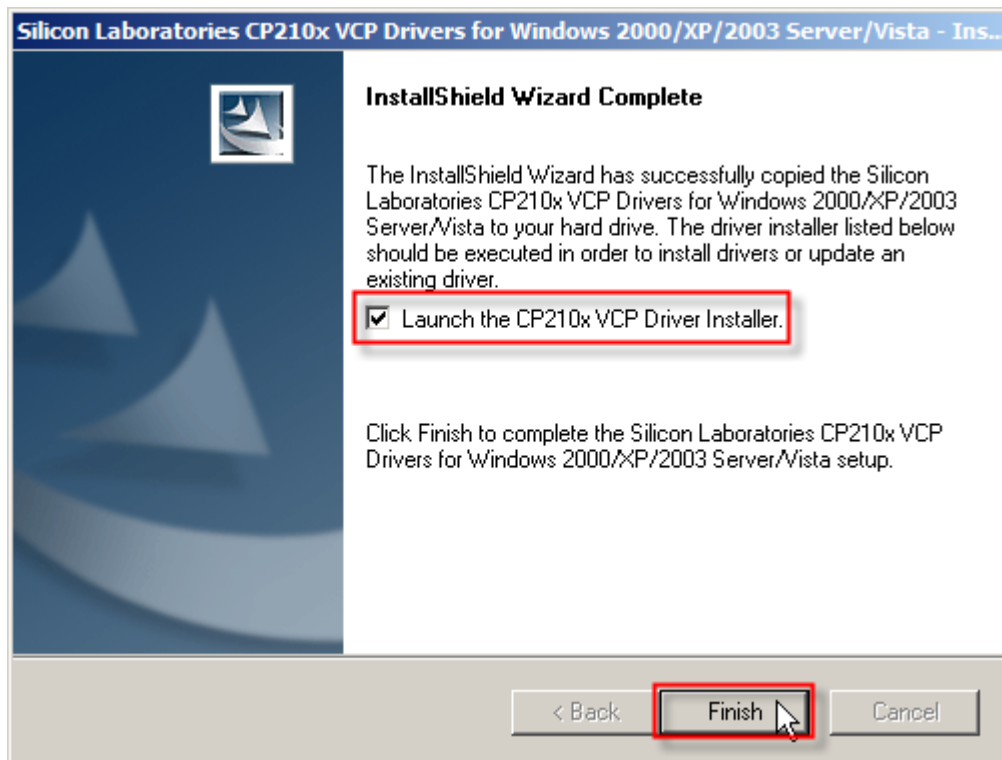
- 4) Click [Install] to begin the installation.



- 5) Wait for several seconds while installing drivers (= copying files to your hard drive).

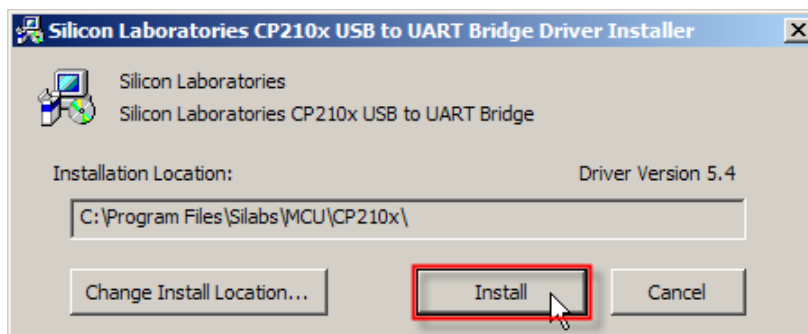


- 6) Click [Launch the CP210x VCP Driver Installer] to install drivers or update an existing driver. Click [Finish] to complete the setup. Otherwise, you can run the installer later from the default install directory.

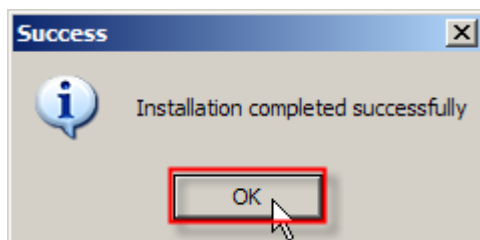


- 7) It will install "CP210x USB to UART Bridge Driver" now.

If you wish to change the destination location, click [Change Install Location...]. Otherwise, click [Install] to continue.

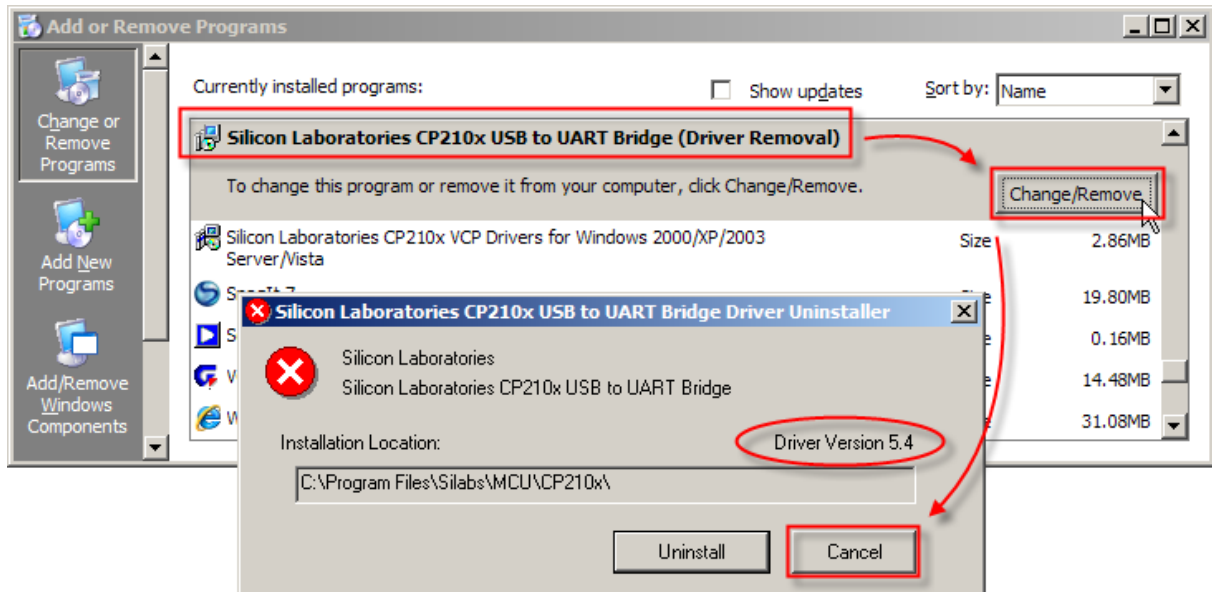


- 8) Wait for several seconds while installing the drivers. Click [OK] to exit the wizard.



CHECKING EXISTING DRIVER VERSION

Go to **Start | Control Panel | Add or Remove Programs**. If you have installed the driver before, it will be on the program list.

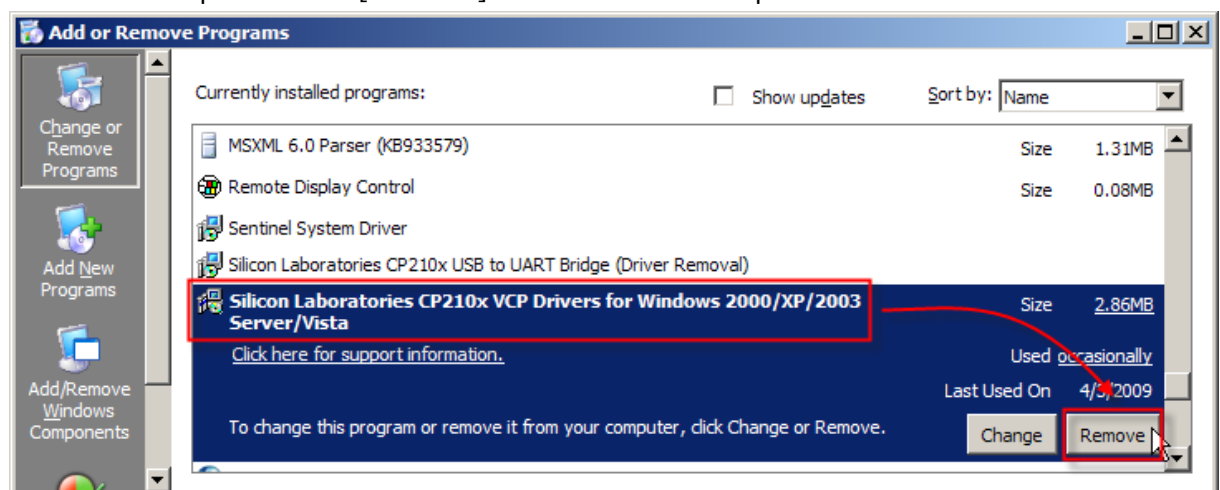


Note: If the existing driver is older than version 5.4, please follow [Removal of Existing Setup File & Drivers](#).

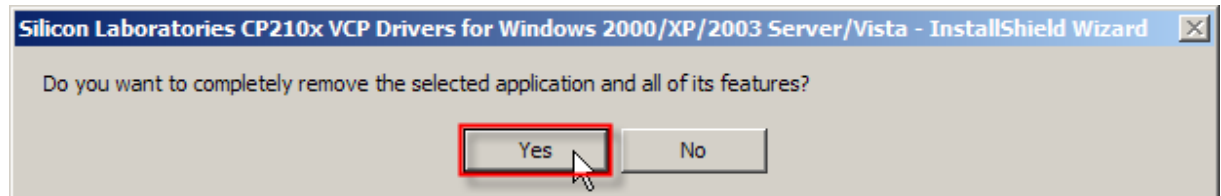
REMOVAL OF EXISTING SETUP FILE & DRIVERS

REMOVAL OF SETUP FILE

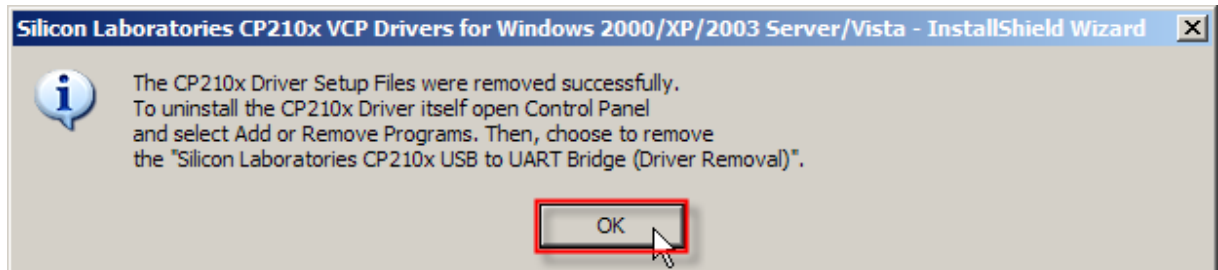
- 1) Select the setup file. Click [Remove] to remove the setup file.



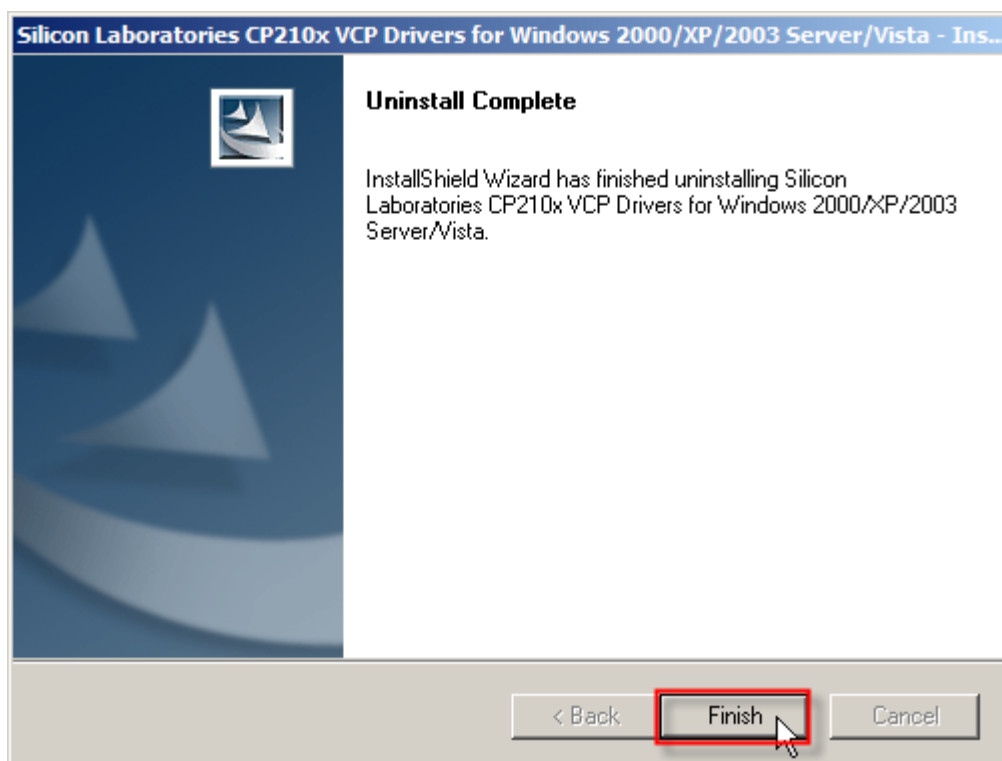
- 2) Wait for several seconds while uninstalling the setup file. Click [Yes].



- 3) Click [OK].

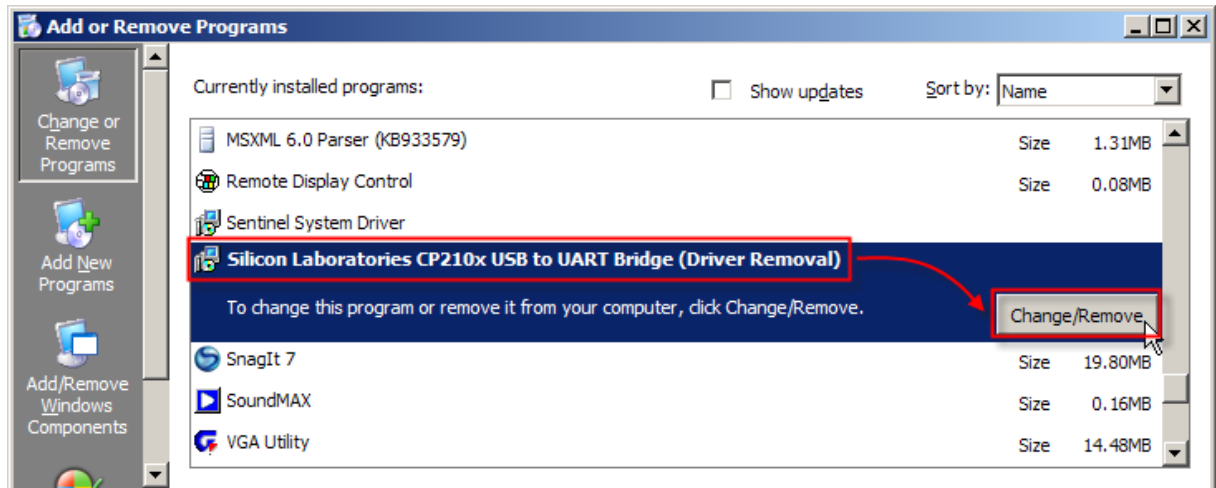


- 4) Click [Finish].

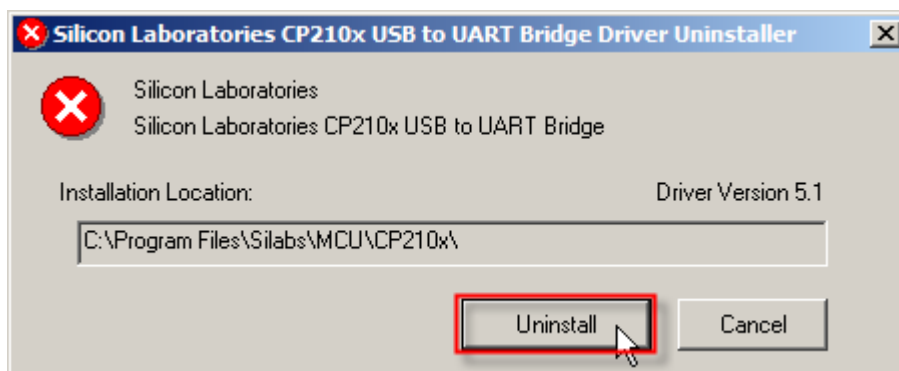


REMOVAL OF DRIVERS

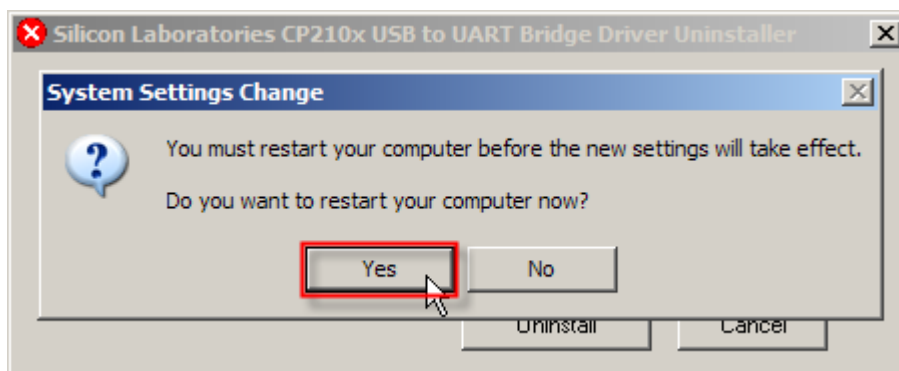
- 5) Select the driver. Click [Change/Remove] to remove the drivers.



- 6) Click [Uninstall].



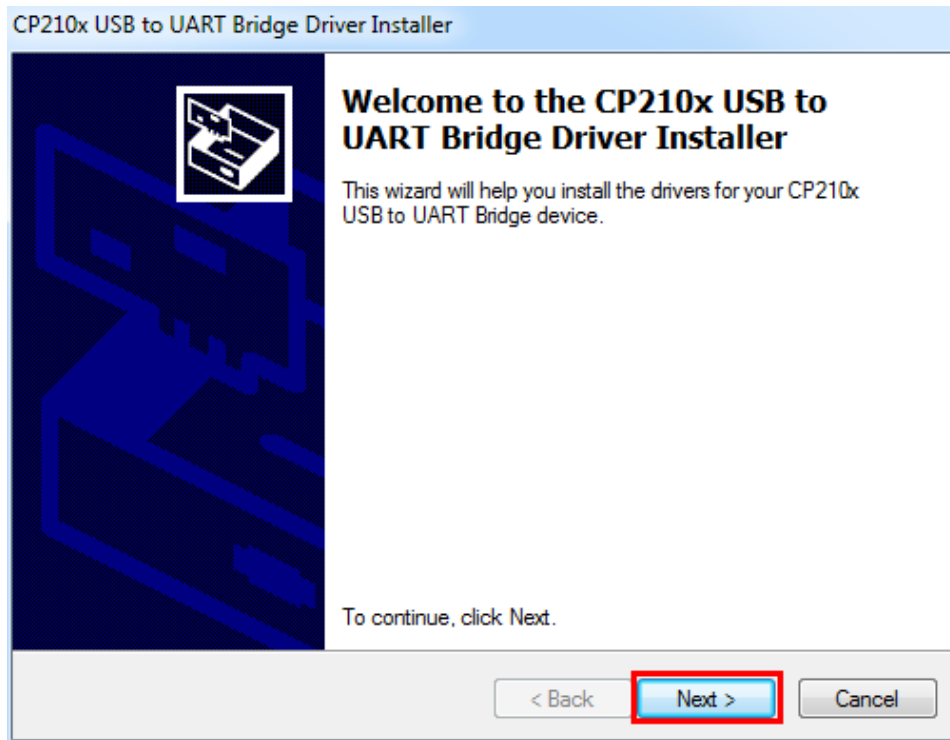
- 7) Click [Yes] to restart your computer.



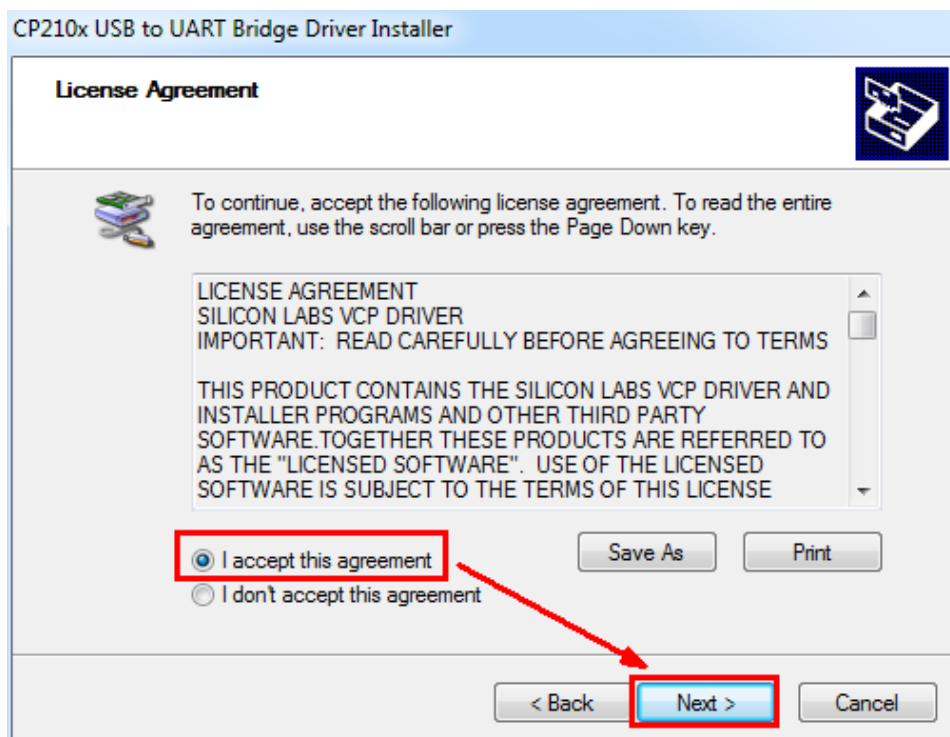
Note: You must restart your computer before the new settings take effect.

DRIVERS FOR WINDOWS 7/WINDOWS 8

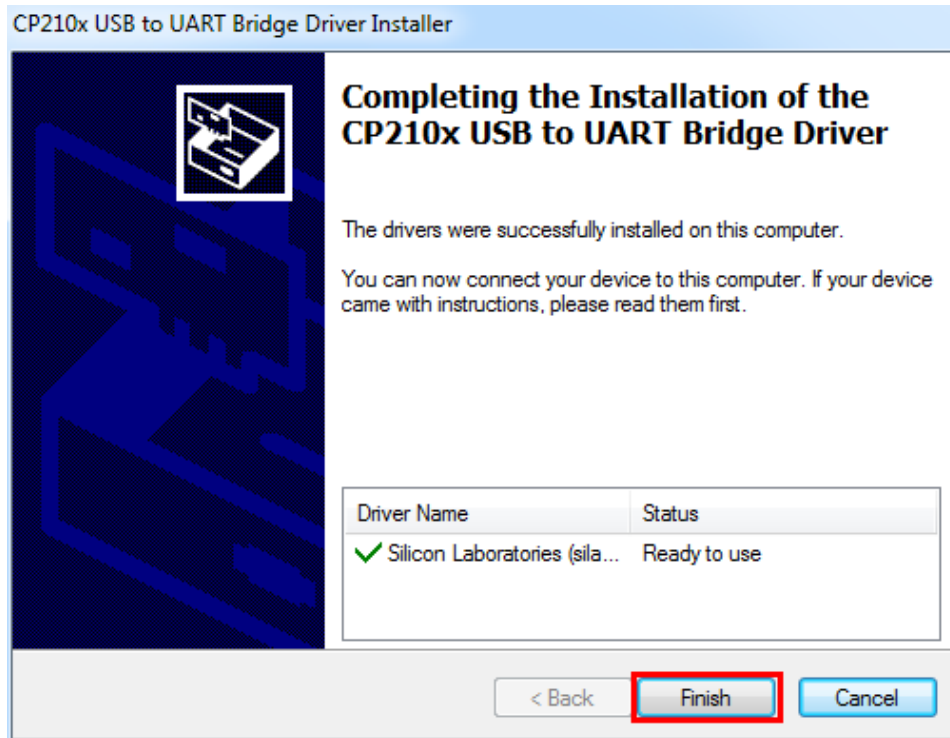
- 1) After double clicking the provided setup file, the installer wizard will guide you through how to install drivers for Windows 7 or Windows 8.



- 2) Read the License Agreement and select to accept the terms. Click [Next] to continue.



- 3) The installation completes soon after the Next button is clicked. Click Finish when the installation completion window shows up.

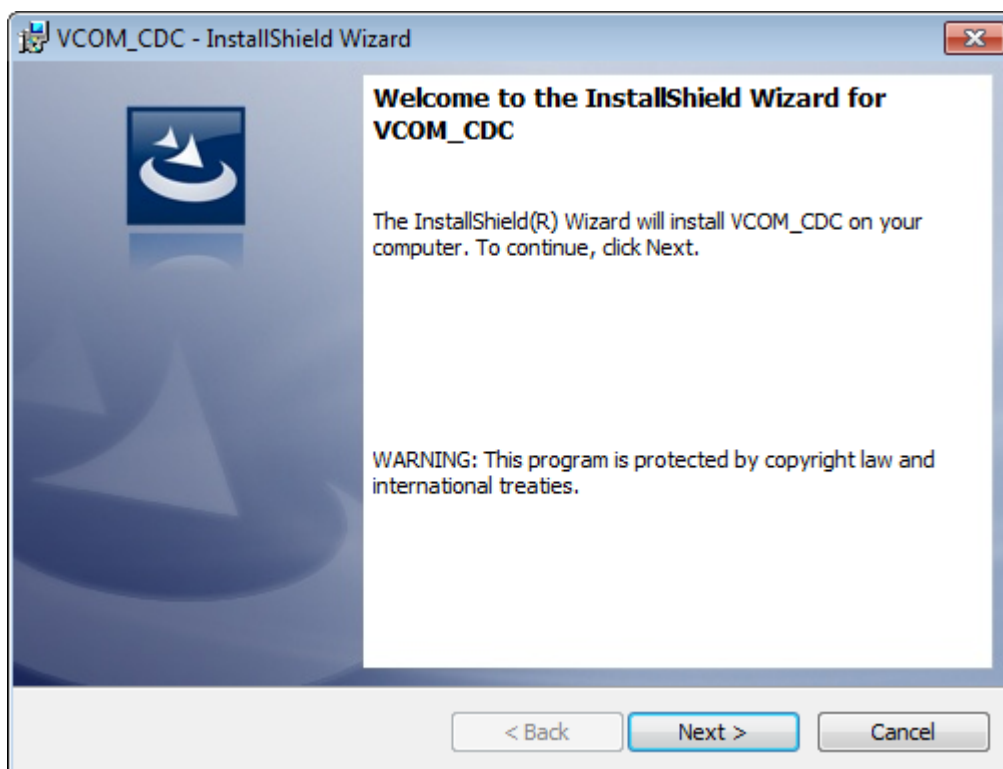


CDC USB VIRTUAL COM DRIVERS

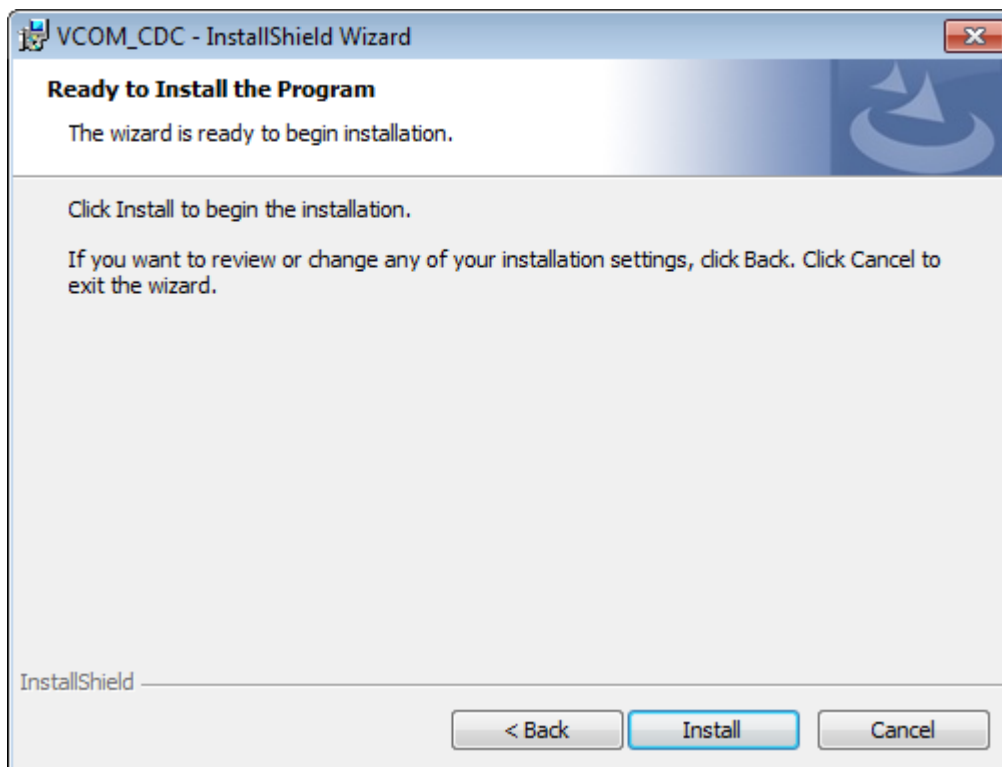
Run the appropriate setup file provided:

File Name	Operating System
CipherLab_VCOM_CDCx86.msi	Windows 2000/XP/2003 Server/Vista
	Windows 7/Windows 8 (32-bit)
CipherLab_VCOM_CDCx64.msi	Windows 7/Windows 8 (64-bit)

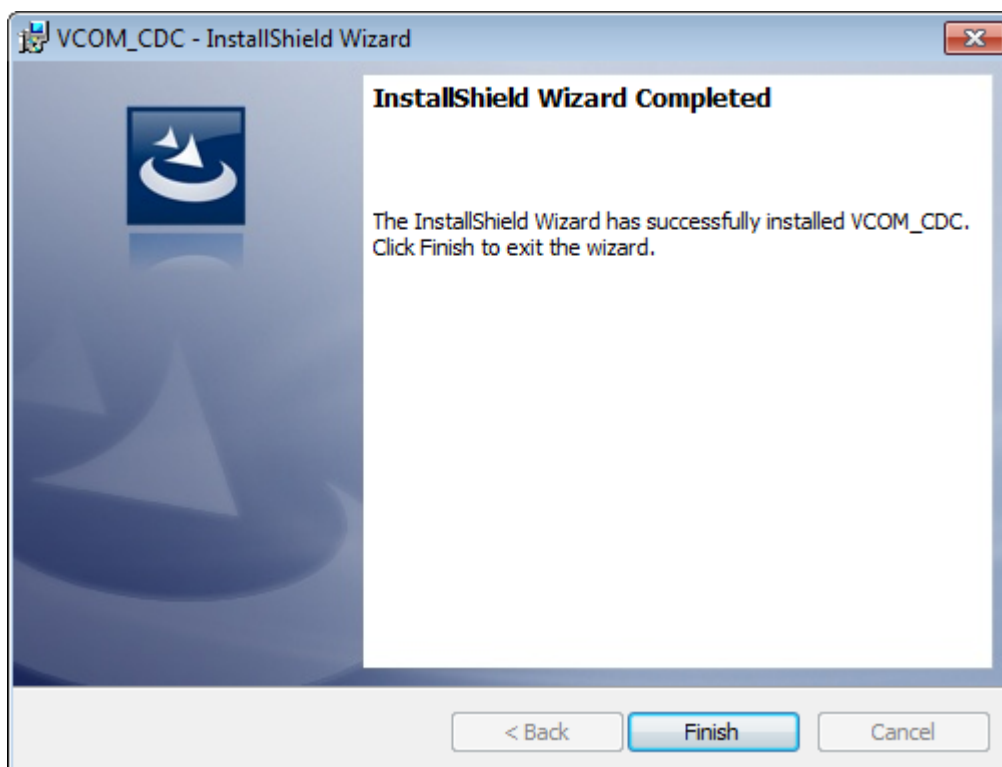
- 1) After double clicking the provided setup file, follow the InstallShield Wizard to install VCOM_CDC drivers for Windows 7/8.



- 2) Make sure you are ready to install the drivers. Click Install to proceed. The installation completes soon after Next is clicked.



- 3) Click Finish when the installation completion window shows up.

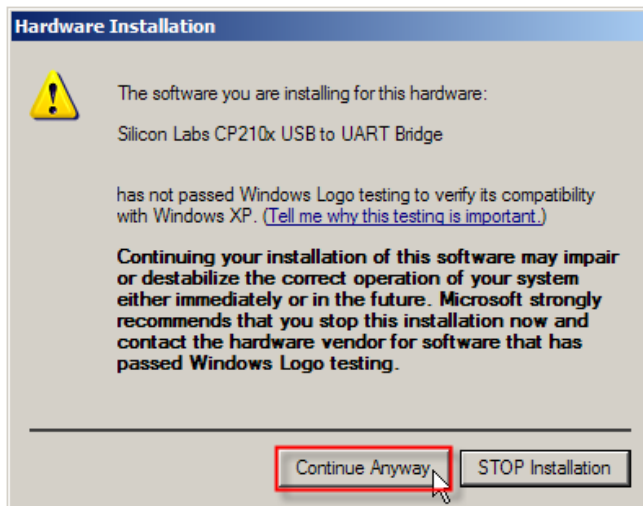


USING USB VIRTUAL COM

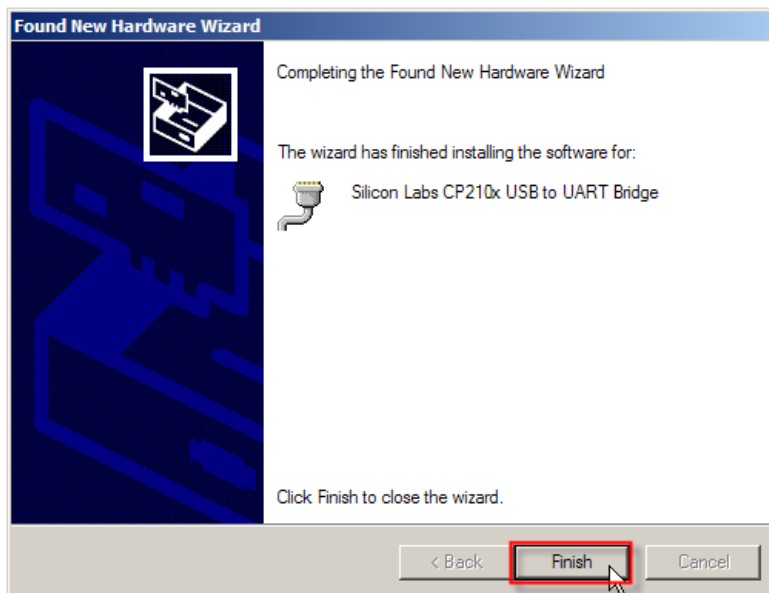
CONNECTING YOUR USB DEVICE TO HOST

Even though the Virtual COM drivers have been installed, the hardware installation dialog will appear for the first time connecting your USB device to PC (or a spare USB port the first time plug with the USB device).

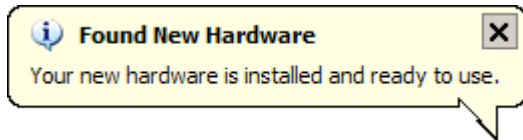
- 1) Having successfully installed the driver to your system, connect your USB device to PC.
- 2) Click [Continue Anyway] to confirm the hardware installation.



- 3) Click [Finish].



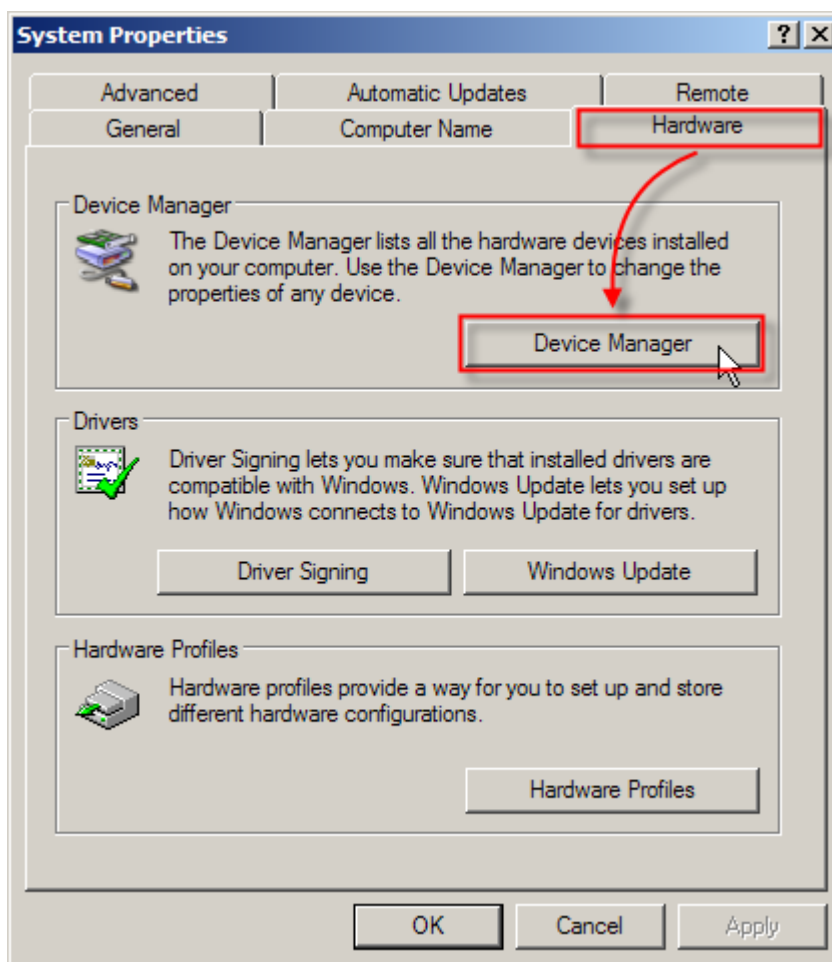
- 4) The system recognizes the new hardware. A few seconds later, another message is displayed indicating that your device is ready for use.



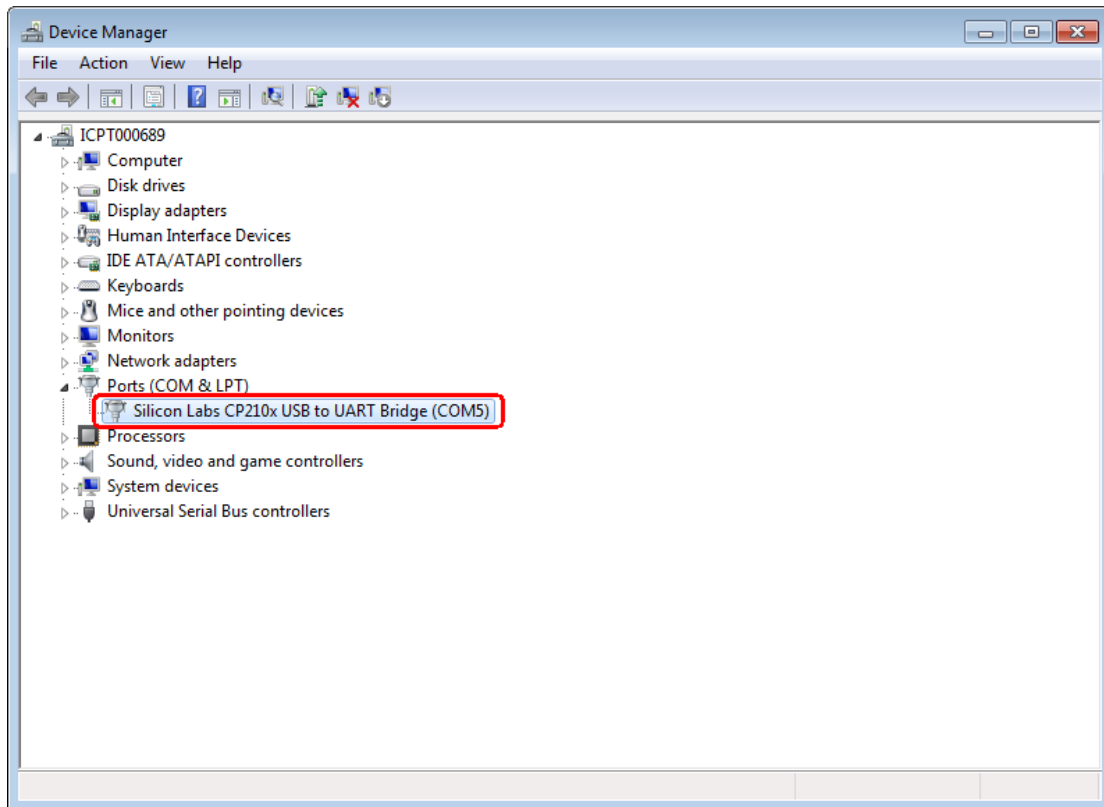
CHECKING AVAILABLE COM PORTS

Check which COM port is assigned to your USB device:

- 1) Go to **Start | Control Panel | System**.
- 2) Click on the Hardware tab.
- 3) Click [Device Manager].



- 4) Click to expand the list of [Ports (COM & LPT)].



OR

